

**Thermo Scientific
Heraeus® Multifuge®
3 Plus Centrifuge Series**



**Unmatched versatility,
exceptional throughput**

supplyLAB

www.supplylab.pt
geral@supplylab.pt

Cacém Park - Edifício 9
Estrada de Paço de Arcos nº88
2739-512 Agualva Cacém
T +(351) 21 4278700
F +(351) 21 4278709

Part of Thermo Fisher Scientific

Thermo
SCIENTIFIC

Heraeus Multifuge 3 Plus Centrifuge Series



Introducing the latest innovation in sample preparation.

From the world leader in serving science comes a breakthrough in tabletop centrifuge performance. The Thermo Scientific Heraeus® Multifuge® 3 Plus Centrifuge Series delivers unprecedented speed and capacity together with the widest range of rotors and adapters available for a premium three-liter centrifuge. Supporting both research and clinical separation needs, our Heraeus Multifuge 3 Plus Series easily accommodates blood collection tubes, conical tubes, flasks, and microtubes, while four ultralight carbon fiber rotors allow you to process more samples more quickly than ever before – freeing you to focus on results.



supplyLAB
www.supplylab.pt



Push your productivity to the next level with high-capacity accessories

The Heraeus Multifuge 3 Plus Series offers industry-leading capacity and performance for a three-liter tabletop centrifuge. Rotor systems designed to handle up to 108 x 5/7 ml blood collection tubes, 28 x 50 ml conical tubes, or 6 x 250 ml bottles in a single run allow you to achieve greater levels of productivity.

New carbon fiber rotors from FIBERLite® provide an advanced alternative to traditional metal rotors. Lightweight and easy to handle, these rotors generate less wear on the centrifuge motor and are resistant to corrosion, fatigue, and repeated autoclaving.

Fast-track sample throughput with unmatched versatility

Nine swinging-bucket rotor configurations and seven fixed-angle rotors give the Heraeus Multifuge 3 Plus Series unmatched versatility, making it a cost-effective investment for any lab.



Modular, ergonomic design

The Heraeus Multifuge 3 Plus Series is designed with a low deck height for easy loading and unloading of samples. The unique soft-touch lid effortlessly clicks into place for worry-free centrifugation.

User-friendly operation

The EASYset™ soft-touch keypad allows for one-touch control of speed, programming, and precooling functions. A bright, easy-to-read LED display allows easy monitoring from across the lab.



Enhanced user and sample safety

The Heraeus Multifuge 3 Plus Series includes numerous safety features to protect you and your samples.

- The SMARTspin® imbalance detection system allows for eye balancing of samples, with automatic termination of a run if excessive imbalance occurs.
- Automatic rotor recognition ensures precise rotor performance while preventing the use of incorrect rotors or parameters.

Exceptional reliability

The brushless induction drive system guarantees years of dependable performance with minimal maintenance, along with whisper-quiet operation and powerful acceleration and braking.



Process more samples in less time

- Cut processing times in half and double your throughput with high-capacity carbon fiber rotors
- Spin up to 14 x 50 ml conical tubes in a single run
- Achieve super-speed performance with RCFs up to 24,000 x g on the benchtop
- Safely perform high-RCF, single-step separations using sterile, disposable conical tubes



SupplyLAB
www.supplylab-apt

Thermo Scientific Heraeus Multifuge 3 Plus Centrifuge Series Rotors and Accessories



TTH-750 High-Capacity Swing-Out Rotor

Description	Rotor Capacity	Max Tube Dimensions (diameter x length, mm)	Heraeus Multifuge 3/3R Plus (120V)		Heraeus Multifuge 3/3R Plus (230V)		Catalog Number
			Max Speed (rpm)	Max RCF (x g)	Max Speed (rpm)	Max RCF (x g)	
TTH-750 High-Capacity Swing-Out Rotor							75006445
Buckets (sold individually unless otherwise noted)							
Round buckets, 4 x 750 ml	4 x 750 ml	100 x 136	4150	3700	4350/4600	4080/4570	75006441
Sealing lids for round buckets (set of two)							75006421
Rectangular buckets, 4 x 250 ml	4 x 250 ml	62 x 120	3750	2990	4350/4600	4020/4490	75006446
Sealing lids for rectangular buckets (set of two)							75006448
Tissue culture T-75 horizontal flask carrier ¹	4 x T-75 ml	60 x 127	4150	3060	4150/4150	3060/3060	75006451
Microplate carrier	4 x 4 standard (16)/ 4 x 1 deep-well (4)	60 x 127	4150	3060	4350/4600	3360/3760	75006449
Tissue culture 250 ml conical bottle carrier	4 x 250 ml	62 x 173	3750	3350	4350/4600	4510/5040	75006497
Bucket, 17 x 15 ml disposable conical tubes	68 x 15 ml	19 x 119	4350	4083	4350/4600	4083/4566	75002023
Bucket, 1 x Aerosolve® canister	4						75006440
Adapters for round bucket, 75006441 (sold individually unless otherwise noted)							
250 ml flat-bottomed bottle	4 x 250 ml	62 x 140					75008144
225/175 ml disposable conical bottle	4 x 225 ml	62 x 140					75008144 + 03095 ²
50 ml round-bottomed tube	28 x 50 ml	29 x 123					75006493
50 ml disposable conical tube (set of four)	28 x 50 ml	29 x 115					11210826
50 ml disposable skirted-conical tube	28 x 50 ml	29 x 115					75006533
15 ml standard tube	76 x 15 ml	17 x 122					75008135
10/15 ml blood collection tube	68 x 10/15 ml	16 x 125					75008136
15 ml disposable conical tube	48 x 15 ml	19 x 119					75008137
10 ml blood collection tube (set of four)	84 x 10 ml	16 x 100					11210821
5/7 ml blood collection tube (set of four)	108 x 5/7 ml	13 x 75/13 x100					11210822
7 ml standard tube	140 x 7 ml	13 x 122					75008133
1.5/2.0 ml disposable microtubes	192 x 1.5/2 ml	11 x 42					75008132
T-75 Nunc™ EasyFlask (set of two)	4 x T-75 ml						75008383
T-25 Nunc EasyFlask (set of two)	4 x T-25 ml						75008384
Adapters for rectangular bucket, 75006446 (sold individually)							
250 ml flat-bottomed bottle	4 x 250 ml	62 x 120					75006465
50 ml round-bottomed tube	16 x 50 ml	29 x 123					75006491
50 ml disposable conical or skirted tube	16 x 50 ml	29 x 115					75006461
10/15 ml standard/blood collection tube	64 x 10/15 ml	17 x 112					75006455
15 ml disposable conical tube	36 x 15 ml	19 x 119					75006456
5/7 ml blood collection tube	80 x 5/7 ml	13 x 75/13 x 100					75006454 + 75005253 ²
7 ml standard tube	112 x 7 ml	13 x 113					75006453
1.5/2.0 ml disposable microtubes	224 x 1.5/2.0 ml	11 x 42					75006452
1. Suitable for Nunc EasyFlask, Greiner Cell Star, and Cell Coat Flasks							
2. Both adapters must be used							

1. Suitable for Nunc EasyFlask, Greiner Cell Star, and Cell Coat Flasks

2. Both adapters must be used



Bioshield[®] Windshielded Swinging Bucket Rotor

Description	Rotor Capacity	Max Tube Dimensions	Max Speed (rpm)	Max RCF (x g)	Max Speed (rpm)	Max RCF (x g)	Catalog Number
Bioshield Windshielded Swinging Bucket Rotor, 4 x 250	4 x 250 ml	62 x 120	5350	5820	5350/5850	5820/6960	75006435
Adapters for Bioshield rectangular bucket (sold individually)							
250 ml flat-bottomed bottle	4 x 250 ml	62 x 120					75006465
50 ml round-bottomed tube	16 x 50 ml	29 x 123					75006491
50 ml disposable conical or skirted tube	16 x 50 ml	29 x 115					75006461
10/15 ml standard/blood collection tube	64 x 10/15 ml	17 x 112					75006455
15 ml disposable conical tube	36 x 15 ml	19 x 119					75006456
5/7 ml blood collection tube	80 x 5/7 ml	13 x 75/13 x 100					75006454 + 75005253 ²
7 ml standard tube	112 x 7 ml	13 x 113					75006453
1.5/2.0 ml disposable microtubes	224 x 1.5/2.0 ml	11 x 42					75006452

2. Both adapters must be used



HIGHplate[®] Windshielded Microplate Rotor

Description	Rotor Capacity	Max Tube Dimensions (w x l x h, mm)	Max Speed (rpm)	Max RCF (x g)	Max Speed (rpm)	Max RCF (x g)	Catalog Number
HIGHplate Windshielded Microplate Rotor	10 standard or 2 deep-well	86 x 128 x 85	5250	5084	5250/5650	5085/5890	75006444

supplylab
www.supplylab.pt

F14-6x250LE Carbon Fiber Large-Volume Rotor



Description	Rotor Capacity	Max Tube Dimensions (diameter x length, mm)	Heraeus Multifuge 3/3R Plus (120V)		Heraeus Multifuge 3/3R Plus (230V)		Catalog Number
			Max Speed (rpm)	Max RCF (x g)	Max Speed (rpm)	Max RCF (x g)	
F14-6x250LE Carbon Fiber Large-Volume Rotor	6 x 250 ml	61 x 124	10000	15316	10000/11000	15316/18533	75006517
Adapters for F14-6x250LE rotor (set of two)							
50 ml disposable conical tubes	6 x 250 ml	29 x 115					75100136
15 ml disposable conical tubes	30 x 15 ml	19 x 119					75101073

Fixed-Angle Rotor



Description	Rotor Capacity	Max Tube Dimensions	Max Speed (rpm)	Max RCF (x g)	Max Speed (rpm)	Max RCF (x g)	Catalog Number
Fixed-Angle Rotor, 6 x 94 ml	6 x 94 ml	38 x 114	10500/12000	12450/16260	10500/12000	12450/16260	75003334
Adapters for 6 x 94 ml rotor (sold individually)							
50 ml round-bottomed tube	6 x 50 ml	29 x 114					75003102
38 ml round-bottomed tube	6 x 38 ml	25 x 104					75003094
16 ml round-bottomed tube	6 x 16 ml	18 x 114					76002906
12 ml round-bottomed tube	12 x 12 ml	16 x 89					75003093
6.5 ml round-bottomed tube	12 x 6.5 ml	13 x 108					75003092
3.5 ml round-bottomed tube	24 x 3.5 ml	11 x 91					75003091
1.5 ml conical microtube	24 x 1.5 ml	11 x 42					76002905

F13-14x50c Carbon Fiber Conical Tube Rotor



Description	Rotor Capacity	Max Tube Dimensions	Max Speed (rpm)	Max RCF (x g)	Max Speed (rpm)	Max RCF (x g)	Catalog Number
F13-14x50c Carbon Fiber Conical Tube Rotor	14 x 50 ml	29 x 115	9000	13855	9000/10000	13855/17105	75006526
Adapters for F13-14x50c rotor (set of two)							
15 ml disposable conical tube	14 x 15 ml	19 x 119					75100378

F15-8x50c Carbon Fiber Conical Tube Rotor



Description	Rotor Capacity	Max Tube Dimensions	Max Speed (rpm)	Max RCF (x g)	Max Speed (rpm)	Max RCF (x g)	Catalog Number
F15-8x50c Carbon Fiber Conical Tube Rotor	8 x 50 ml	29 x 115	12000	16743	14000/14500	22789/24446	75006516
Adapters for F15-8x50c rotor (set of two)							
15 ml disposable conical tube	8 x 15 ml	19 x 119					75100378

Highconic Rotor



Description	Rotor Capacity	Max Tube Dimensions	Max Speed (rpm)	Max RCF (x g)	Max Speed (rpm)	Max RCF (x g)	Catalog Number
Highconic Rotor, 6 x 50 ml	6	29 x 115	8500	10020	8500	10020	75003057
Adapters for 6 x 50 ml rotor (sold individually)							
50 ml disposable conical tube (six adapters included with rotor)	6 x 50 ml	29 x 115					75003103
50 ml round-bottomed tube	6 x 50 ml	29 x 118					75003102
38 ml round-bottomed tube	6 x 38 ml	25 x 112					75003094
16 ml round-bottomed tube	6 x 16 ml	18 x 124					76002906
15 ml disposable conical tube	6 x 15 ml	19 x 119					75003095
12 ml round-bottomed tube	12 x 12 ml	16 x 96					75003093
6.5 ml round-bottomed tube	12 x 6.5 ml	13 x 108					75003092
3.5 ml round-bottomed tube	24 x 3.5 ml	11 x 103					75003091
1.5 ml round-bottomed tube	24 x 1.5 ml	11 x 42					76002905

F21-48x1.5/2.0 ml Carbon Fiber Microtube Rotor



Description	Rotor Capacity	Max Tube Dimensions	Max Speed (rpm)	Max RCF (x g)	Max Speed (rpm)	Max RCF (x g)	Catalog Number
F21-48x1.5/2.0 ml Carbon Fiber Microtube Rotor	48 x 1.5/2.0 ml	11 x 42	15000	24400	15000	24400	75006527

Microliter Rotor (3 Plus only)



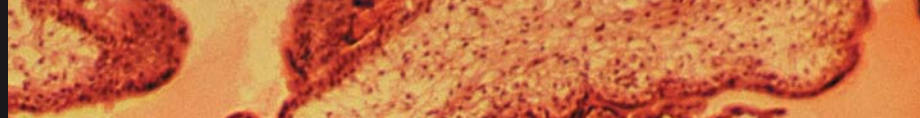
Description	Rotor Capacity	Max Tube Dimensions	Max Speed (rpm)	Max RCF (x g)	Max Speed (rpm)	Max RCF (x g)	Catalog Number
24 x 1.5/2.0 ml Microliter Rotor	24 x 1.5/2.0 ml	11 x 42	15000³	21890³	15000³	21890³	75003332
Adapters for 24 x 1.5/2.0 ml rotor							
0.5/0.6 ml microliter tubes (24/pkg)	24 x 0.5/0.6 ml	8 x 42					76003768
0.24/0.4 ml microliter tubes (24/pkg)	24 x 0.24/0.4 ml	6 x 38					76003759
0.2 ml microliter tubes (24/pkg)	24 x 0.2 ml	6 x 38					76003750

3. 3S-R only

Note: Heraeus Multifuge 3 Series centrifuges manufactured prior to 2007 may require a software upgrade to operate carbon fiber rotors. Please contact your sales or service representative to obtain a part number and pricing where applicable.



Indicates that the centrifuge accessory has been successfully tested for biological containment.



Thermo Scientific Heraeus Multifuge 3 Plus Centrifuge Series Specifications



Specifications	Heraeus Multifuge 3 Plus	Heraeus Multifuge 3R Plus
Max Capacity	4 x 750 ml (or 4 x 4 microplates)	4 x 750 ml (or 4 x 4 microplates)
Max RCF	24,400 x g	24,400 x g
Control System	Microprocessor via EASYset (soft-touch keypad)	Microprocessor via EASYset (soft-touch keypad)
Programs	4 user programs	4 user programs
Speed Range	300 - 15,000 adjustable in 10 rpm increments	300 - 15,000 adjustable in 10 rpm increments
Drive System	Brushless induction	Brushless induction
Precooling Function	1 pre-temp program	1 pre-temp program
Functions	RCF preselection, quick-on, automatic rotor recognition and imbalance detection	RCF preselection, quick-on, automatic rotor recognition and imbalance detection
Acceleration/Braking Rates	9/9	9/9
Max Noise Level	< 66 db(A)	< 55 db(A)
Run Time	0 - 9 hrs, 59 mins, continuous operation	0 - 9 hrs, 59 mins, continuous operation
Temperature Range	N/A	-9° C to 40° C, CFC-free refrigerant
Safety	Lid lock and lid interlock (2 automatic lid locks)	Lid lock and lid interlock (2 automatic lid locks)
Standards	EN 61 010-1, EN 61 010-2-020 CE marked, CSA approved	EN 61 010-1, EN 61 010-2-020 CE marked, CSA approved
Electrical	120 V (60 Hz), 230 V (50/60 Hz)	120 V (60 Hz), 230 V (50/60 Hz)

Ordering Information	Heraeus Multifuge 3 Plus	Heraeus Multifuge 3R Plus
Catalog Numbers		
120 V (60 Hz)	75004365	75004375
230 V (50/60 Hz)	75004361	75004371
Accessory Carts		
Benchtop	76000077	75000075
Under bench	76000078	76000076
Product Dimensions		
Height (lid closed) [cm/in]	36.2/14.3	36.2/14.3
Width [cm/in]	55.1/21.7	73.3/28.7
Depth [cm/in]	66.6/26.2	66.6/26.2
Weight [kg/lb]	89/196	131/288

A History of Performance and Reliability

For more than 50 years, our Thermo Scientific Heraeus centrifuges have stood for outstanding performance and reliability in the lab. That tradition continues today. From basic benchtop instruments to advanced floor models, we take pride in manufacturing centrifuges that deliver reliable operation and consistent results year after year.

Worldwide Service and Support

We are committed to keeping your lab equipment working at peak performance levels. Our goal is to help you lower ownership costs, manage labs more effectively, and increase productivity. Contact your local account representative to learn more about our service offerings, including service agreements, preventive maintenance, on-site field repair, depot repair, compliance services and educational services.

©2007 Thermo Fisher Scientific Inc. All rights reserved. All trademarks are the property of Thermo Fisher Scientific Inc. and its subsidiaries. Specifications, terms and pricing are subject to change. Not all products are available in all countries. Please consult your local sales representative for details.

Thermo
SCIENTIFIC

North America: USA/Canada +1 866 984 3766

Europe: Austria +43 1 801 40 0, Belgium +32 2 482 30 30, Finland +358 9 329 100, France +33 2 2803 2000, Germany national toll-free 08001-536 376, Germany international +49 6184 90 6940, Italy +39 02 95059 1, Netherlands +31 76 571 4440, Russia/CIS +7 095 225 11 15, Spain/Portugal +34 93 223 3154, Switzerland +41 44 454 12 12, UK/Ireland +44 870 609 9203

Asia: China +86 21 6865 4588 or +86 10 5850 3588, India +91 22 5542 9494, Japan +81 45 453 9220, Other Asian countries +852 2885 4613

Countries Not Listed: +49 6184 90 6940 or +33 2 2803 2000

www.thermo.com
www.supplylab-apt

BRO-SPSHM3-0407